

ADVANTAGES OF OKNOPLAST ALUMINIUM WINDOWS

Large structures
Modern Design
Wide range of products – various designs
Energy saving
Durability and stain resistant
Easy to maintain

- **Safety and ease of use.** OKNOPLAST aluminum Windows is easy to maintain. The lightness of the material improves its installation. The solutions used guarantee optimal thermal insulation and water and wind proofness.

- **Environmentally friendly.** Our products are the ideal choice for those who care about the environment. ALUHAUS joinery can be 100% recycled as a secondary raw material, without any loss of quality.

- **Modern design.** We attach great importance to the appearance of products ALUHAUS. A rich palette of colors and versatility designs allow you to match the joinery to any architectural style.

- **Energy saving.** High thermal insulation of ALUHAUS products makes our aluminum joinery the perfect furnishings for passive house sand energy-efficient houses.

- **Windows for years.** The advantage of our products is their high durability. They are not damaged under the influence of UV rays and moisture, do not rust and do not deform. They are also resistant to the harmful influence of atmospheric conditions, and their maintenance is simplified.



Production Process

- High Tech CNC machinery
- Detailed Quality control
- Qualified Staff and Engineers
- Professional Software
- Experienced consultants



4 design options:
MIRU EVO STANDARD
MIRU EVO MODERN
MIRU EVO STEEL
MIRU EVO HIDDEN

WINDOWS

MIRU EVO Range

One of the most modern window profile systems that provides very high thermal insulation. It is used to make structures that includes: fixed, casement, tilt, tilt-and-turn, tilt-and-slide windows, as well as single- and double-leaf exterior doors and window solutions with doors. Wide range of profiles, reinforcements, coupling mullions allow to build structures from simple single windows up to advanced storefronts.

Advantages:

- The U-Factor from 0.14 BTU*
- Frame installation depth of 75mm (3")
- Glass packages up to 63mm (2.48")
- Height of the frame with sash from only 70mm (2.75")
- Wide range of system profiles to suit any design requirements

MIRU EVO STANDARD

Classic design combined with very advanced thermal break and gasket system provides the unique thermal parameters and air and water tightness. Due to its high rigidity may be used to build large windows and storefronts even in high wind load zones.

SPECIFICATION

- Material: Aluminium / Polyamide
- Min. Height of frame: 50mm (1.97")
- Min. Height of sash: 43mm (1.69")
- Overall height of frame and sash 98mm (3.85")
- Depth of frame 75mm (4.13")
- Glazing bead height 15mm (0.59")
- Single sash max size: 1300 x 2800mm (51.2" x 110.2")
- Double sash in one frame max size 2600 x 2400mm (98.4" x 94.5")
- Door sash max size 1404 x 2810mm (55.27" x 110.6")
- U-value from 0.14
- Integrated Nailing Fin

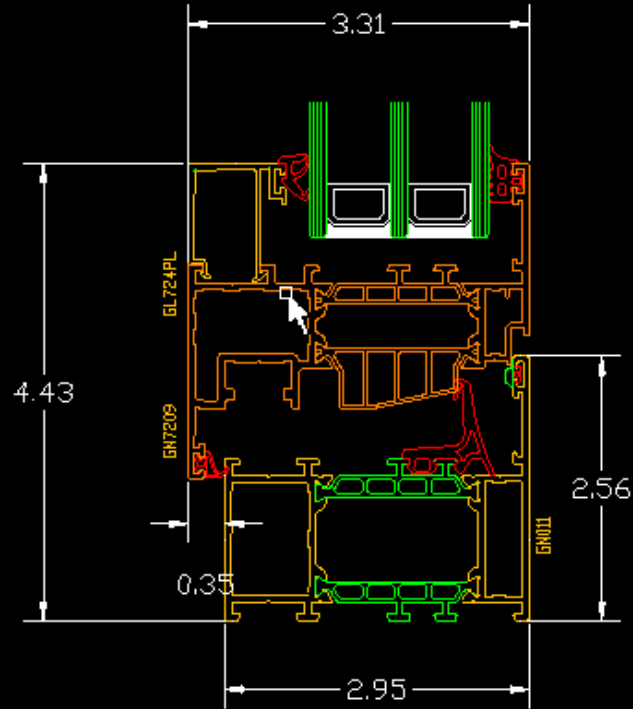
DESCRIPTION

- Perfect solution for the storefront system
Thanks to the high wind load resistance and narrow mullion of 55mm (2.16").
- Classic Design of Tilt and Turn Window
- U-value from 0.14 (with optional thermal inserts)
- Narrow mullion from 55mm (2.16")
- Wide range of profiles
- Height of frame and sash from 92mm (3.62")
- Advanced design of internal gasket
- Glass unit up to:
 - Fixed frame - 56mm (2.20")
 - Sash – 65mm (2.56")

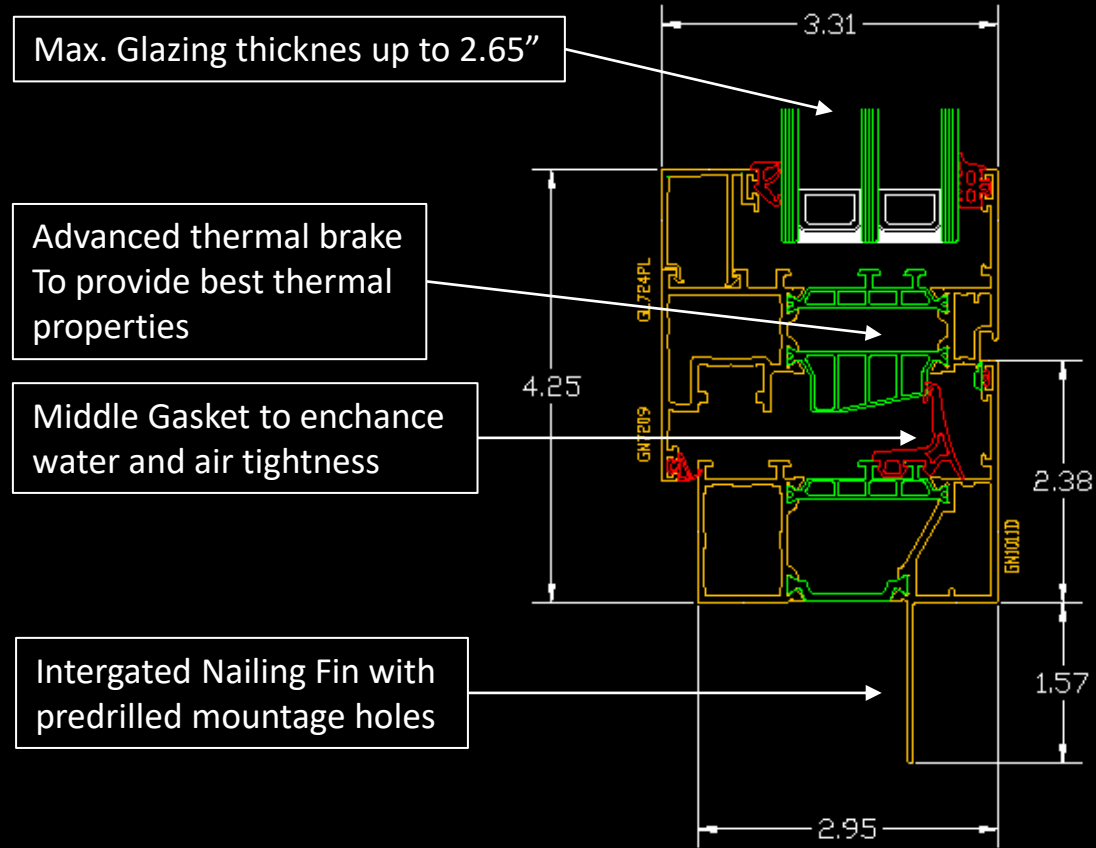


MIRU EVO STANDARD Typical Sections

Standard sash / frame section

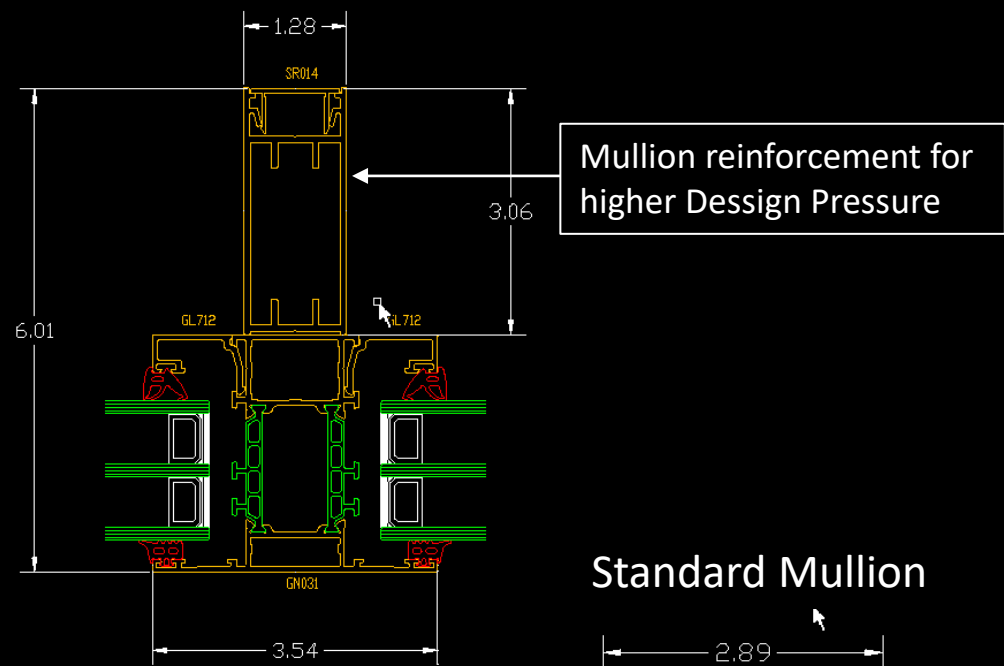


Standard sash / frame with Nailing Fin section

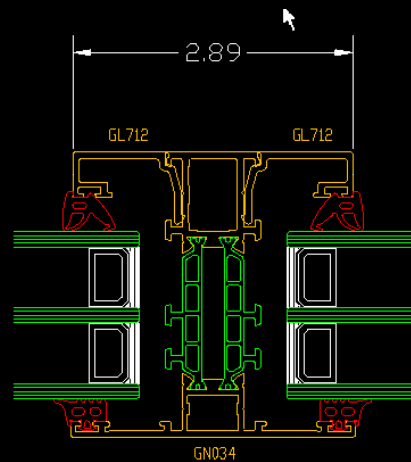


MIRU EVO STANDARD Typical Sections

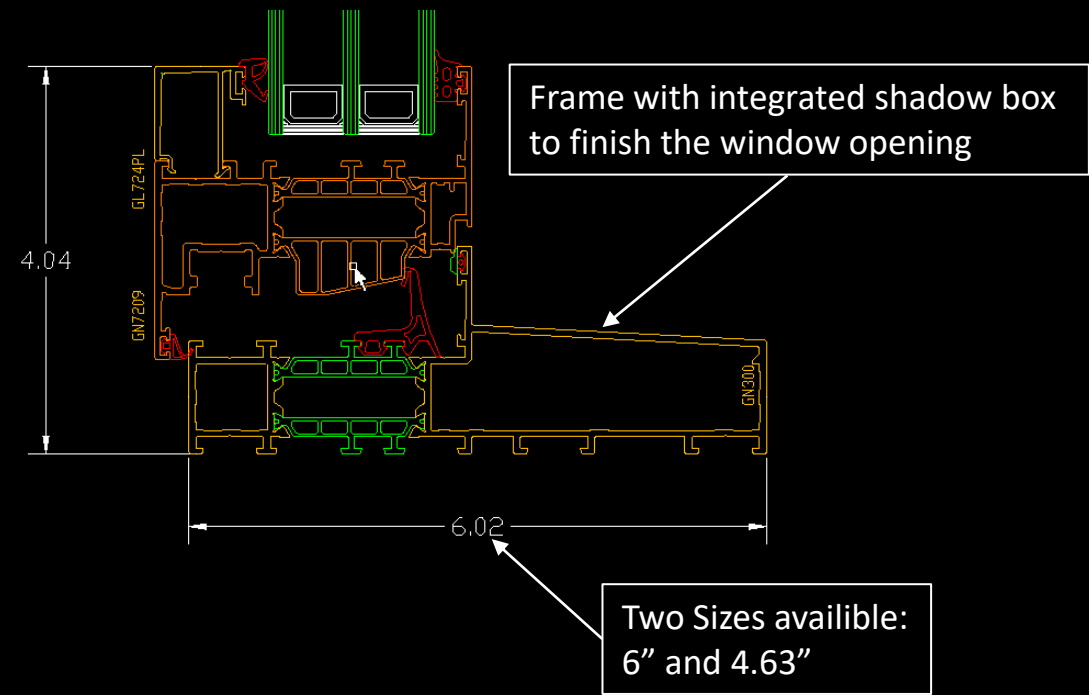
Mullion with reinforcement



Standard Mullion



Monoblock Frame



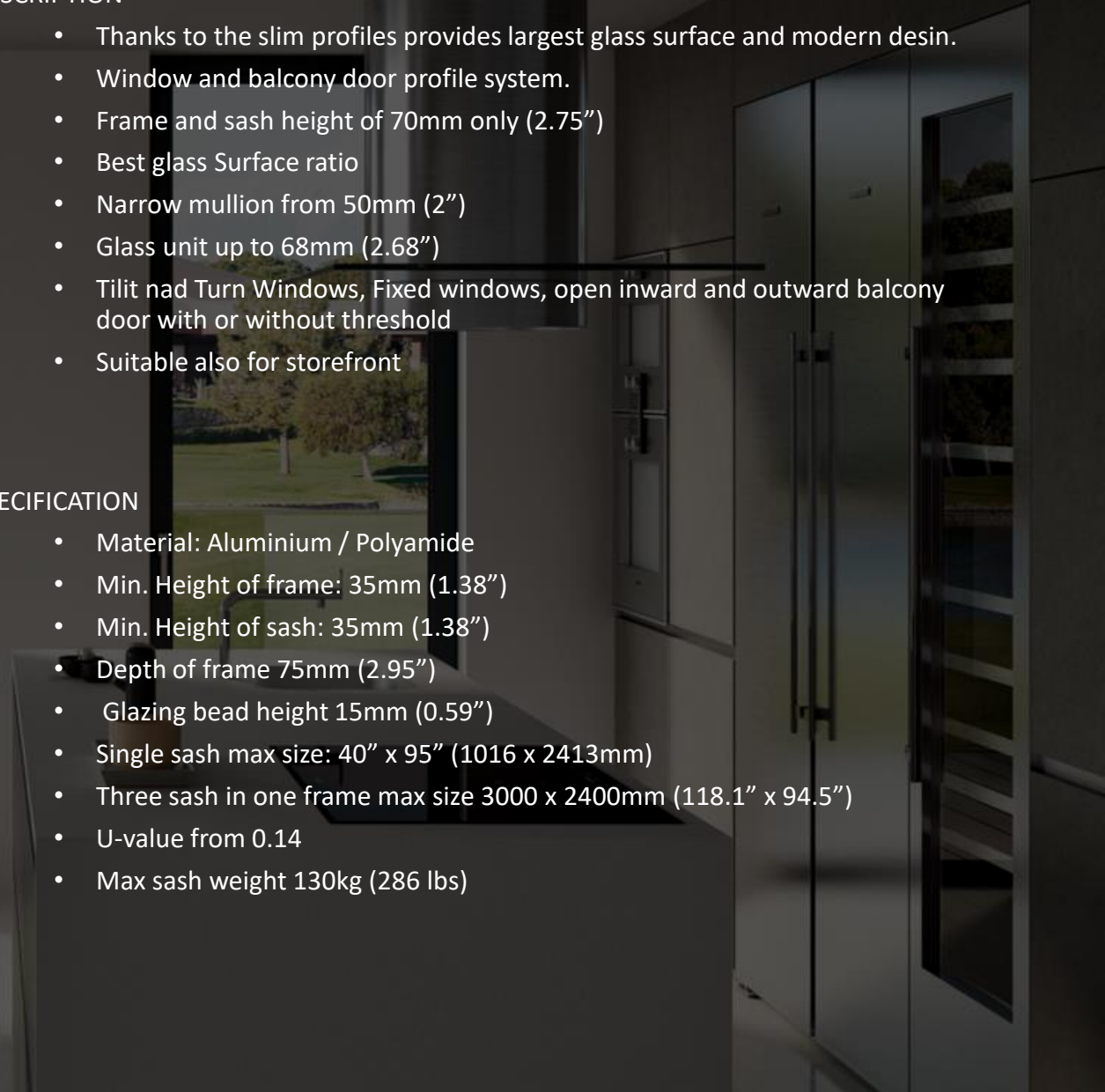
MIRU EVO MODERN

DESCRIPTION

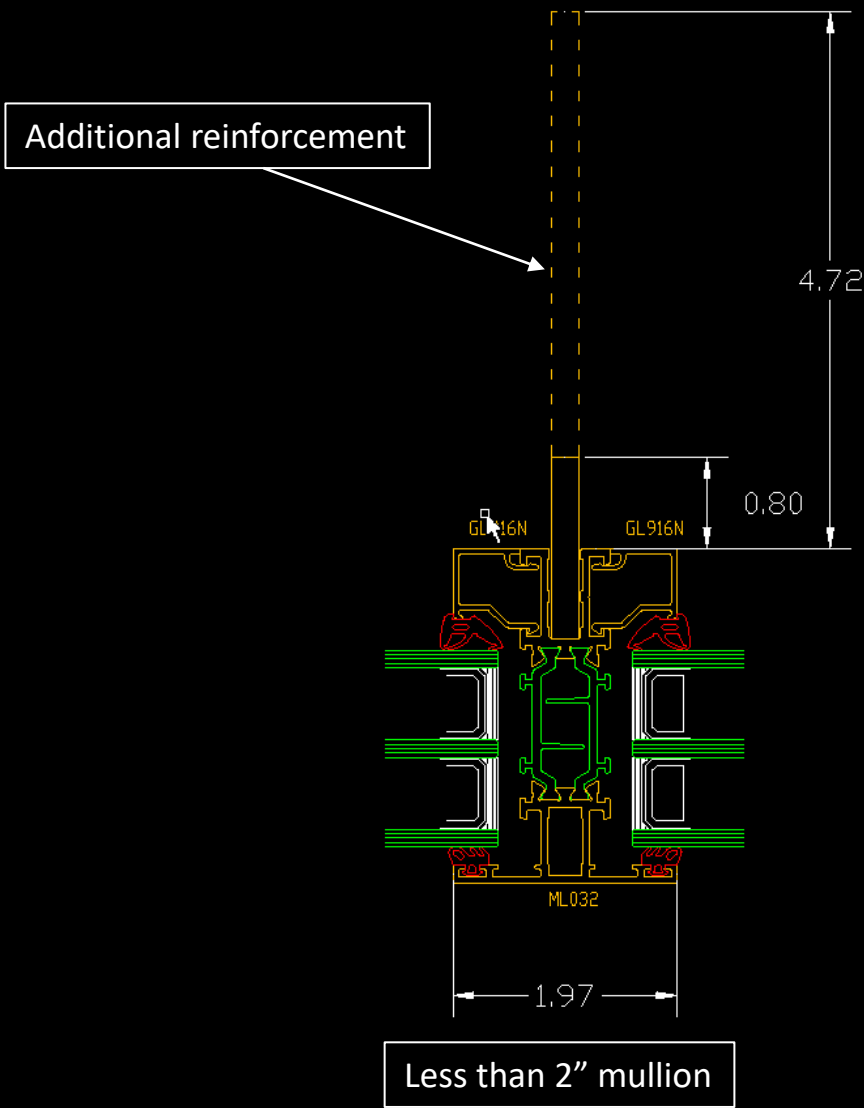
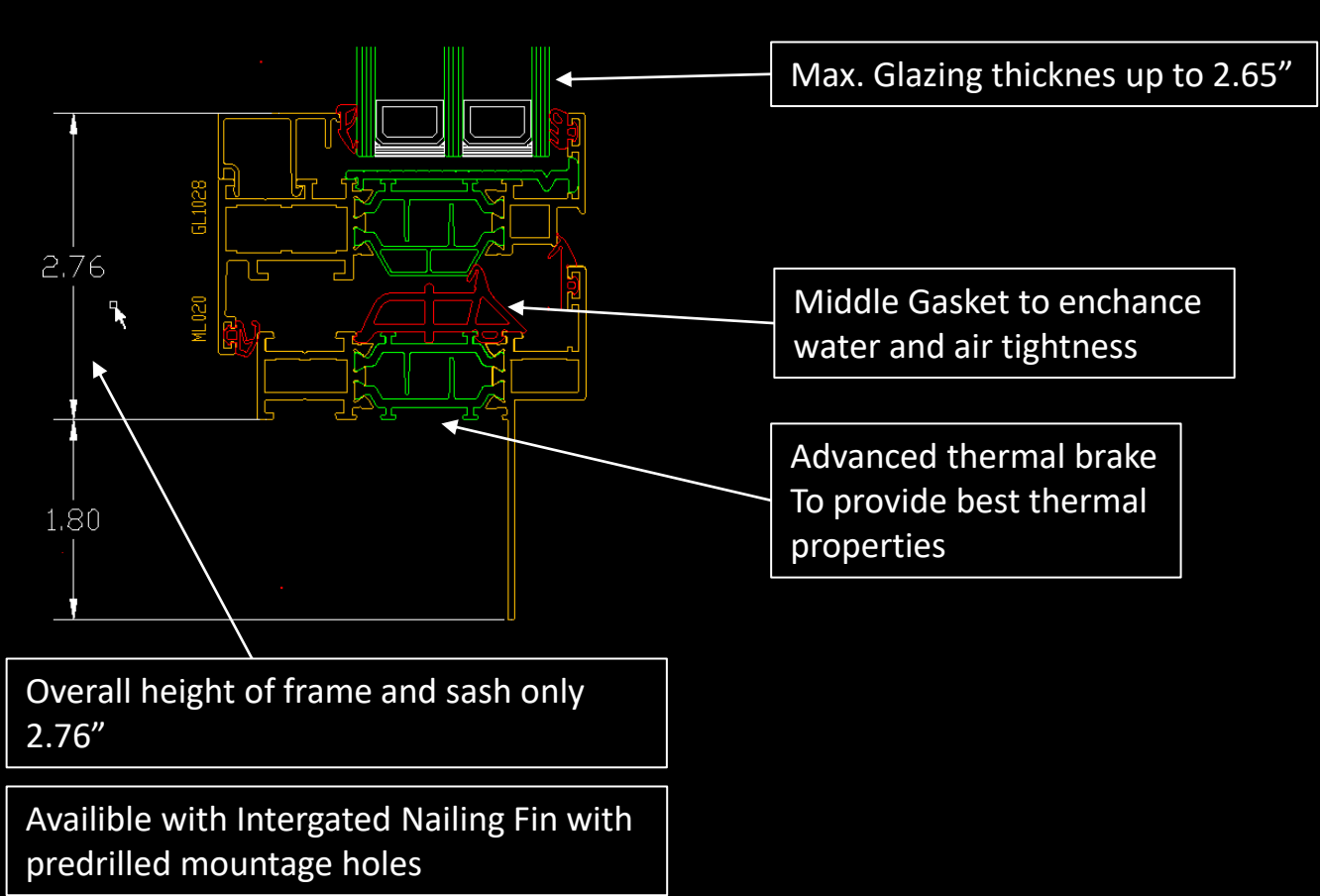
- Thanks to the slim profiles provides largest glass surface and modern design.
- Window and balcony door profile system.
- Frame and sash height of 70mm only (2.75")
- Best glass Surface ratio
- Narrow mullion from 50mm (2")
- Glass unit up to 68mm (2.68")
- Tilt and Turn Windows, Fixed windows, open inward and outward balcony door with or without threshold
- Suitable also for storefront

SPECIFICATION

- Material: Aluminium / Polyamide
- Min. Height of frame: 35mm (1.38")
- Min. Height of sash: 35mm (1.38")
- Depth of frame 75mm (2.95")
- Glazing bead height 15mm (0.59")
- Single sash max size: 40" x 95" (1016 x 2413mm)
- Three sash in one frame max size 3000 x 2400mm (118.1" x 94.5")
- U-value from 0.14
- Max sash weight 130kg (286 lbs)



MIRU EVO MODERN Typical Sections



MIRU EVO STEEL

This is the most prominent design in the series STEEL LOOK, in keeping with its name, refers to the aesthetics of traditional steel windows, characteristic of lofts and industrial buildings. The profiles of this line will perfectly perform well in modern architecture, residential architecture, as well as older buildings undergoing renovation.

DESCRIPTION

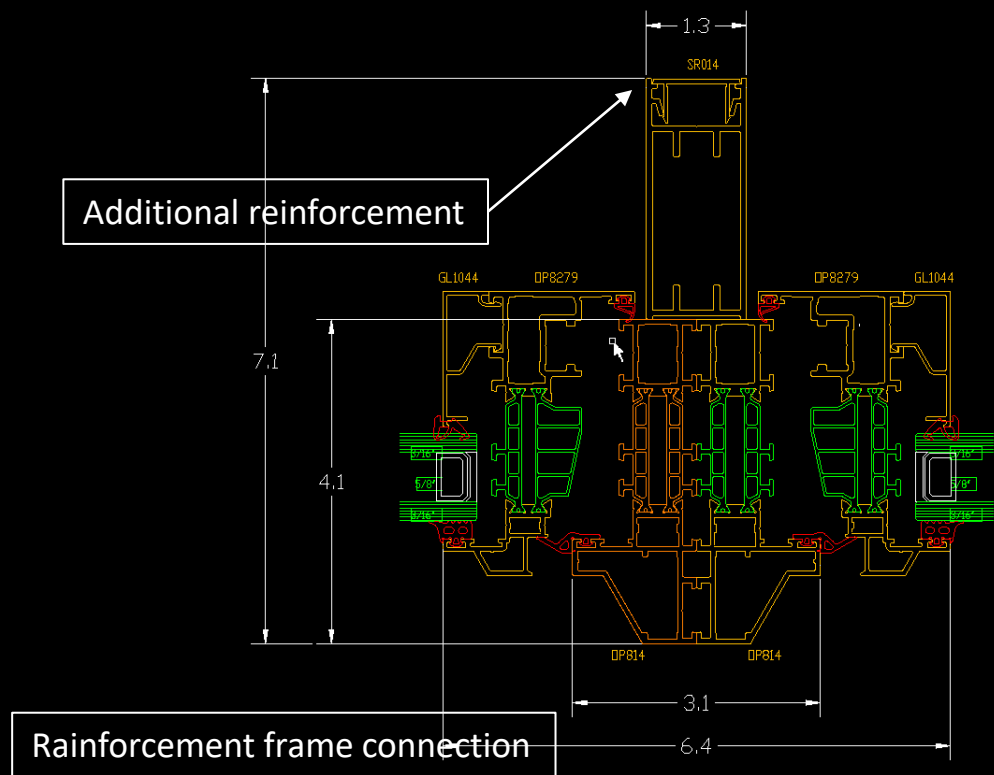
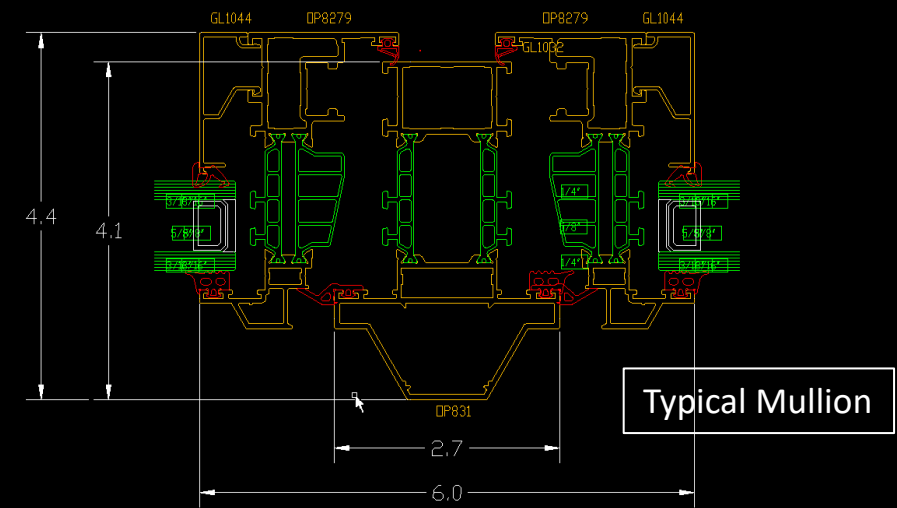
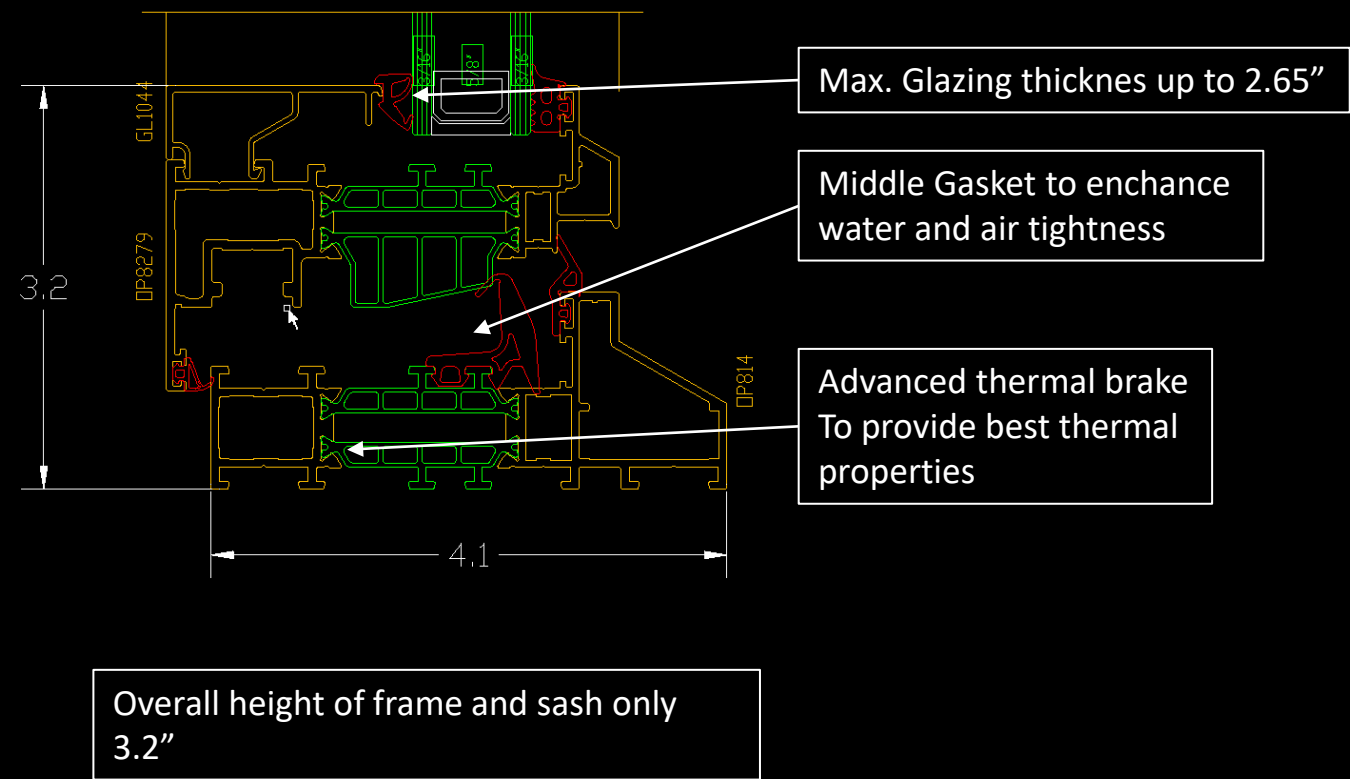
- Window and balcony door profile system.
- Steel Look design
- Frame and sash height of 70mm only (2.75")
- Best glass Surface ratio
- Narrow mullion from 50mm (2")
- Glass unit up to 68mm (2.68")
- Tilt and Turn Windows, Fixed windows, open inward and outward balcony door with or without threshold
- Suitable also for storefront

SPECIFICATION

- Material: Aluminium / Polyamide
- Min. Height of frame: 35mm (1.38")
- Min. Height of sash: 35mm (1.38")
- Depth of frame 105mm (4.13")
- Glazing bead height 15mm (0.59")
- Single sash max size: 40" x 95" (1016 x 2413mm)
- Three sash in one frame max size 3000 x 2400mm (118.1" x 94.5")
- U-value from 0.14
- Max sash weight of 130kg (286 lbs)



MIRU EVO STEEL Typical Sections



MIRU EVO HIDDEN

Specially designed profiles and hidden sash give the impression that all windows look the same from the outside.

DESCRIPTION

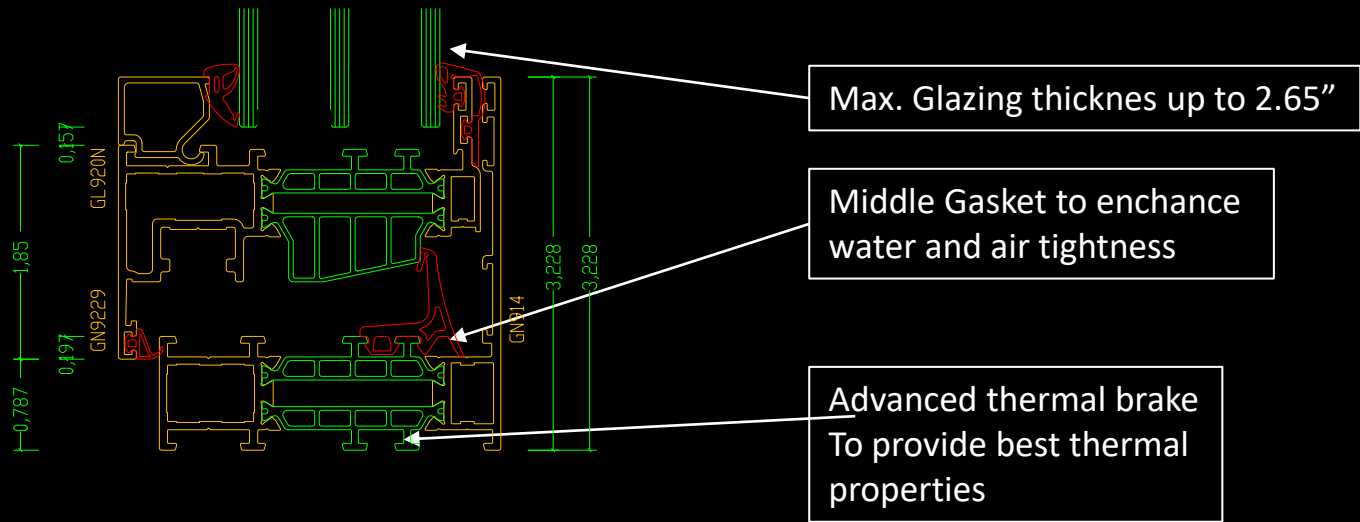
- Invisible sash from the outside
- Window and balcony door profile system.
- Frame and sash height of 70mm only (2.75")
- Best glass Surface ratio
- Narrow mullion from 50mm (2")
- Glass unit up to 68mm (2.68")
- Tilt and Turn Windows, Fixed windows, open inward and outward balcony door with or without threshold
- Suitable also for storefront

SPECIFICATION

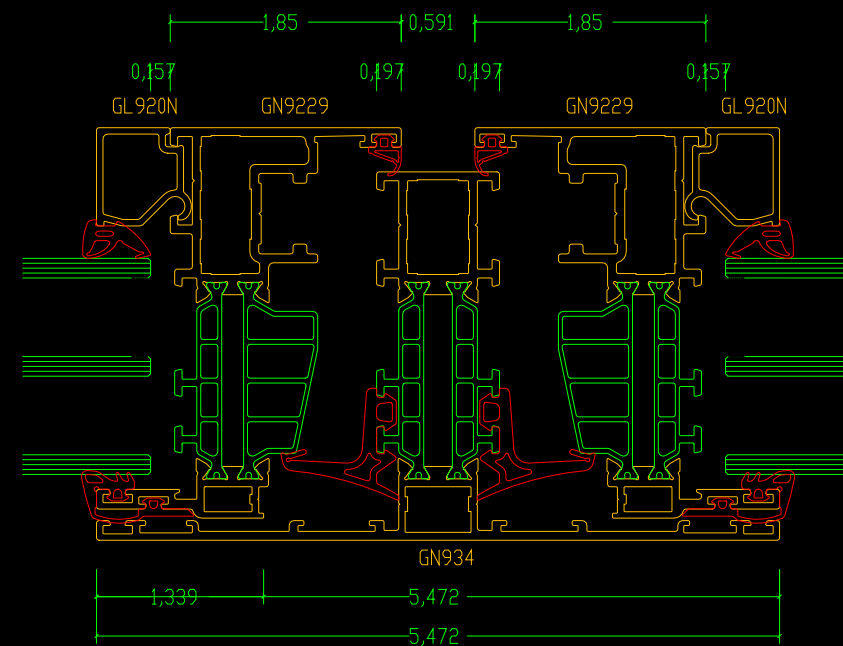
- Material: Aluminium / Polyamide
- Min. Height of frame: 70mm (2.75")
- Min. Height of sash: 0mm (0")
- Depth of frame 75mm (4.13")
- Glazing bead height 15mm (0.59")
- Single sash max size: 1230 x 1480mm (48.4" x 58.3")
- Three sash in one frame max size 3000 x 2400mm (118.1" x 94.5")
- U-value from 0.14



MIRU EVO-HIDDEN Typical Sections



Overall height of frame with hidden sash only 3.28"

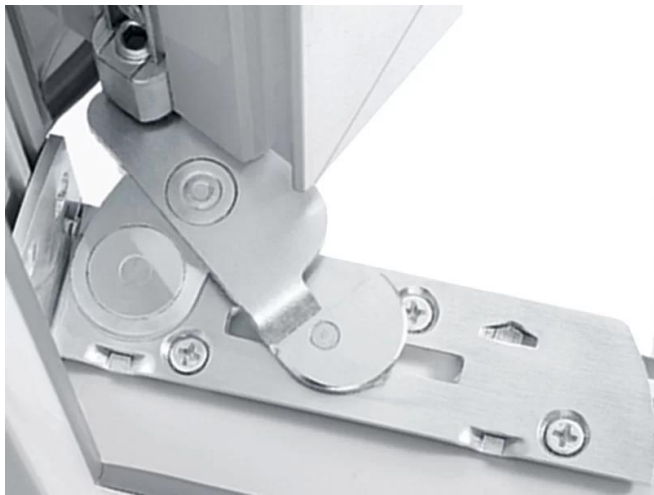


Mullion Section

MIRU EVO Accesories



Window Restrictor



Hidden Hinges



Handle Slek +



Handle Slek



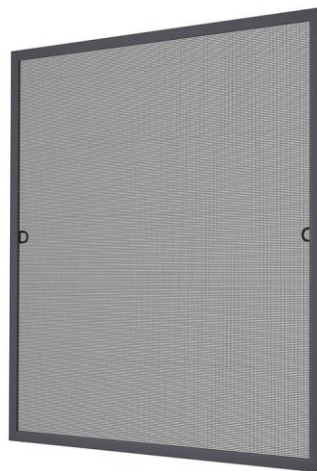
Handle Design+



Handle Model 1033



Handle Pixel



Mosquito Screen



Handle Design+
with key



Handle Model 1033
with key

SLIDING DOORS



SLIDING DOORS

ALUVIEW STANDARD

A lift-and-slide system with noticeably narrower and lower profiles gives the doors a visual lightness.

The larger glass Surface even better illuminates spaces, providing them bright and harmonious. Thanks to the use of Thermal break, enriched with the addition of glass fiber, the door has increased thermal insulation, which increases the comfort of householders.

The structure of the profiles allows to make modern, large-size doors with large glazing. Used materials and technical solutions help achieve a high degree of thermal and acoustic protection.

Application and functionality

- Sturdy and slender profiles make it possible to build low threshold doors with a construction height of up to 2900 mm (114") and leaf width up to 3000 mm (118"). Visibly narrower and lower profiles are optically lighter
- Number of sliding sashes: 1-2Maximum sash weight 300 kg (661 lb)
- The first narrow mullion on the market with a width of only 42 mm (1.65").
- Low Threshold Available
- Dedicated handles in the color of the construction
- Microventilation (optional) and assisted opening (optional) Doors available in double-leaf, monorail and four-leaf

Design

- Frame depth 129 mm (5.08")
- Sash depth 59mm (2.32")

Sizes

- Max sash weight – 300kg (661 lb)
- Max Height – 2900mm (114")
- Max Sash width – 3000mm (118")

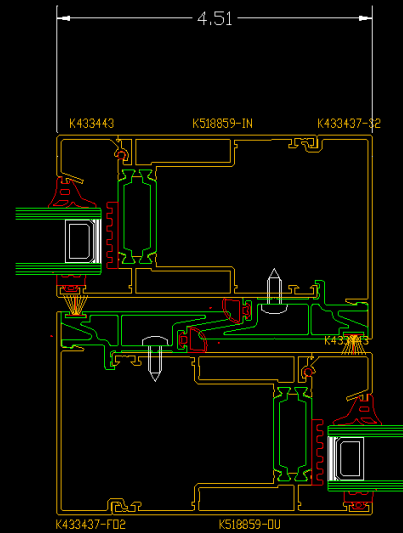
Glazing

- Max glazing thickness 42mm (1.65")

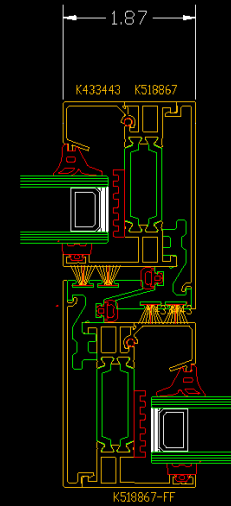


SLIDING DOORS

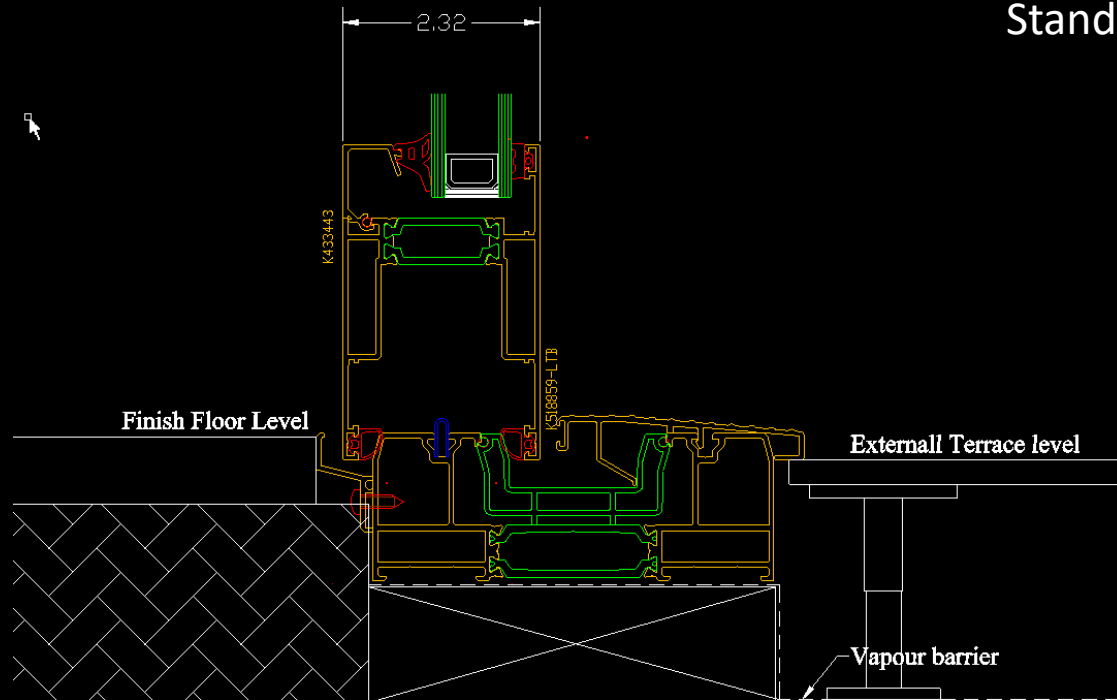
ALUVIEW SATNDARD– Typical Sections



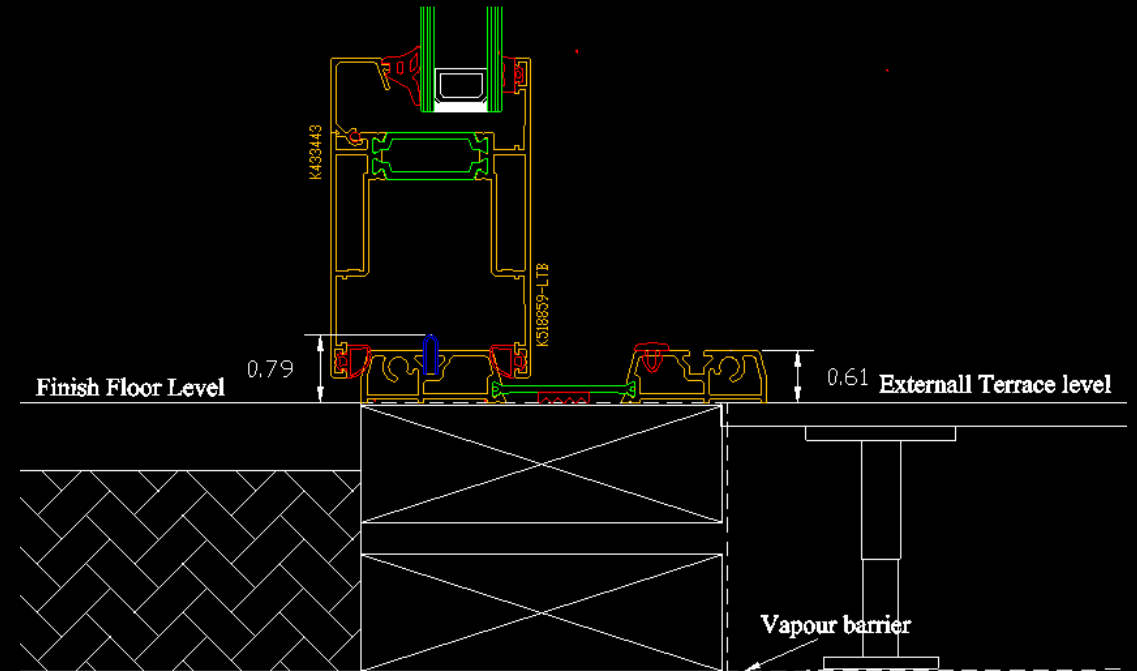
Standard Mullion



Narrow Mullion



Standard threshold



Flat Step

SLIDING DOORS

ALUVIEW PREMIUM

A premium sliding system with improved thermal insulation parameters thanks to the use of a thermal separator enriched with glass fibre. The structure of the profiles allows the construction of large, impressive doors with triple-glazed sealed units as standard. The materials and technical solutions used help achieve a high level of thermal and acoustic protection. These doors are perfect for all types of houses and apartments.

- Sliding system with increased thermal insulation, thanks to the use of thermal interlayer, enriched with the addition of glass fiber.
- The construction of profiles allows making exclusive doors of large dimensions, filled with double and triple glass.
- The materials and technical solutions used help achieve a high degree of thermal and acoustic protection.
- These doors are excellent perform in the development of single-family houses and comfortable apartments that require open spaces.

Application and functionality

- robust and slender profiles allow construction of low-threshold doors with heights of up to 3.2 m (126") and width up to 3.3 m (130")
- number of sliding wings: 1-4 pieces
- maximum sash weight 400 kg (881 lb) – larger constructions and glazing means more light in your home
- Motorized sash available
- possibility of using closing sensors - reed switches microventilation (optional)
- narrow mullion with a width of only 48 mm available
- Corner without post
- Flat Threshold 0mm optionally

Design

- Frame depth 174 – 271 mm (6.85"-10.67")
- Sash depth 77mm (3.03")

Glazing

- Max glazing thickness 58mm (2.28")

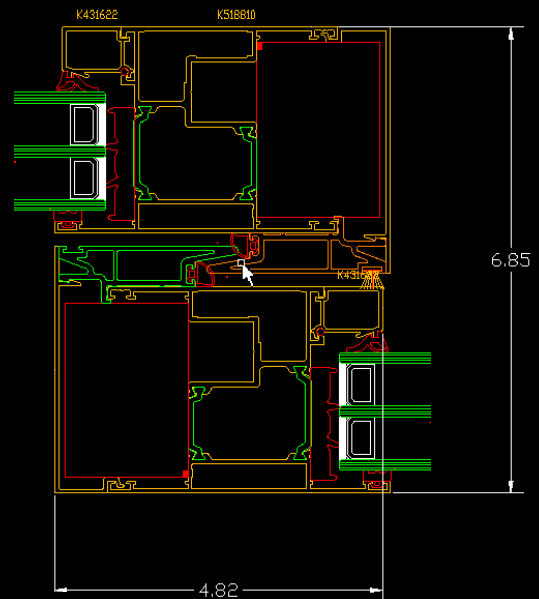
Sizes

- Max sash weight – 400kg (881 lb)
- Max height – 3200mm (126")
- Max sash width – 3300mm (130")

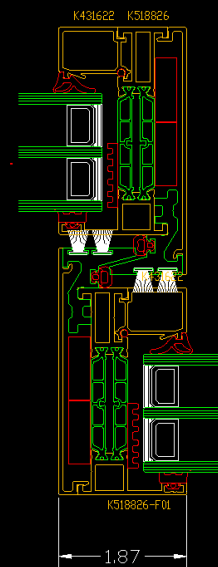


SLIDING DOORS

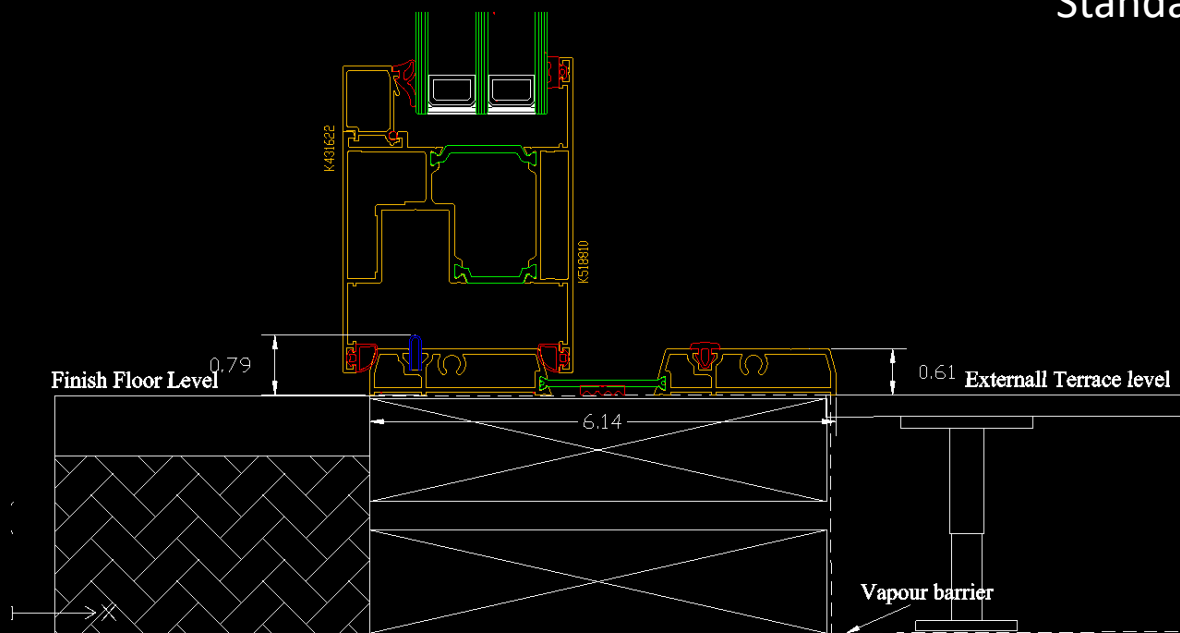
ALUVIEW PREMIUM– Typical Sections



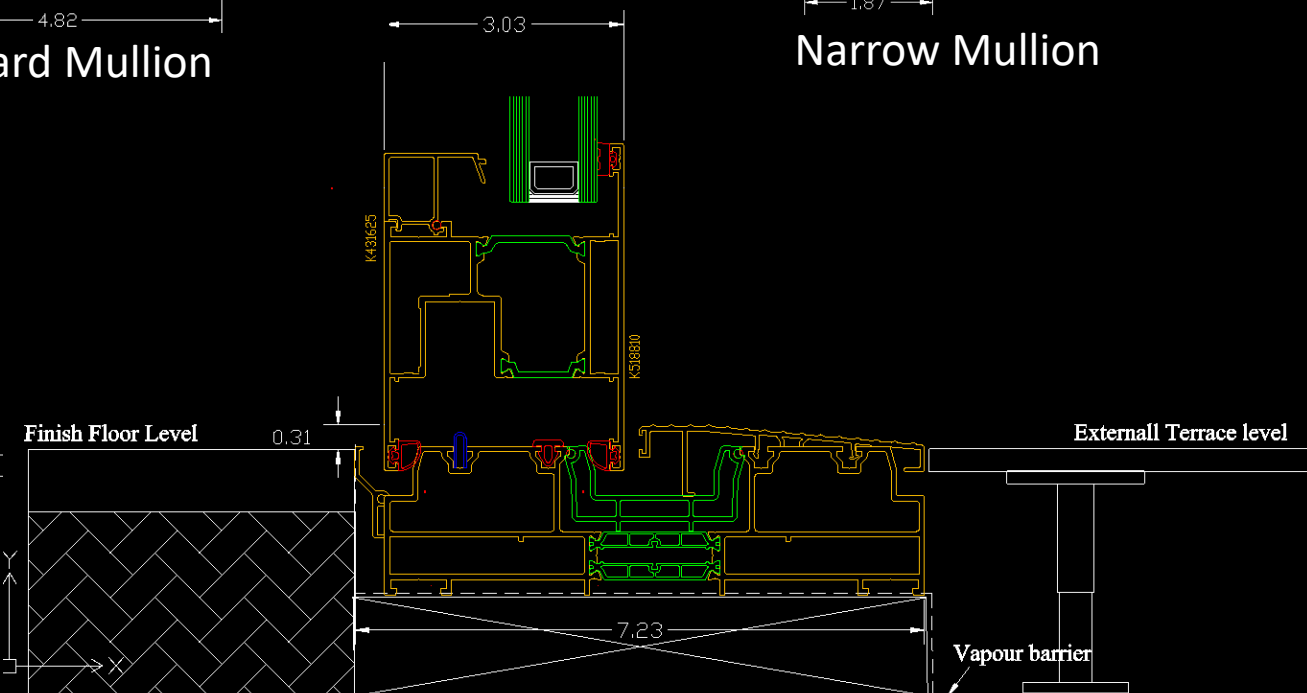
Standard Mullion



Narrow Mullion



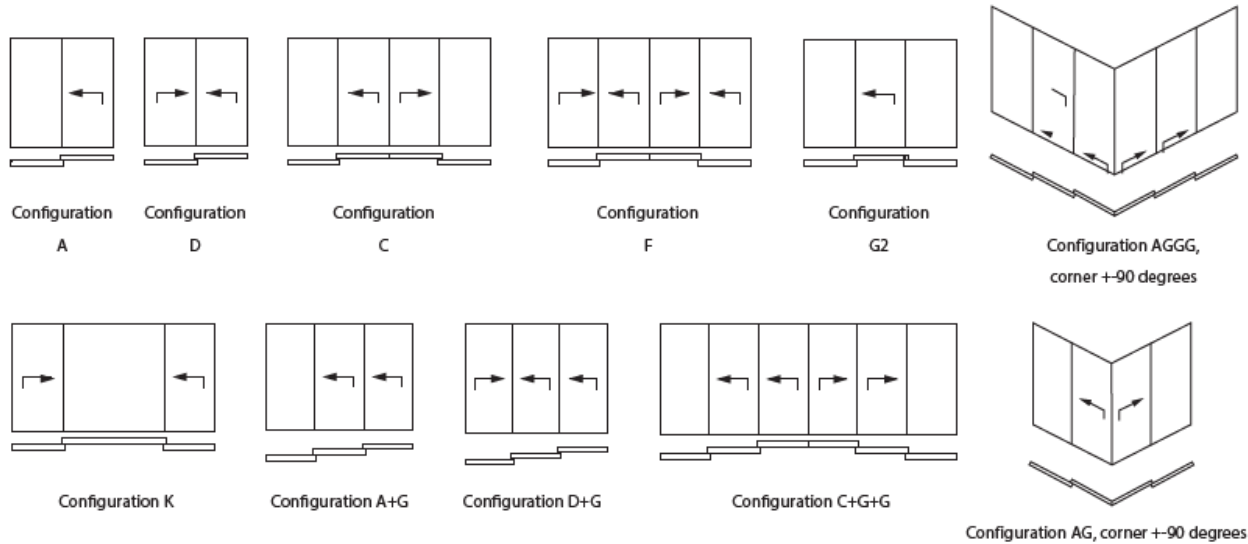
Flat Step



Standard threshold

SLIDING DOORS

ALUVIEW PREMIUM



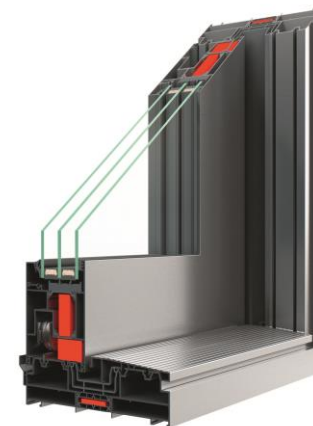
ALUHAUS 77 HST CONFIGURATIONS



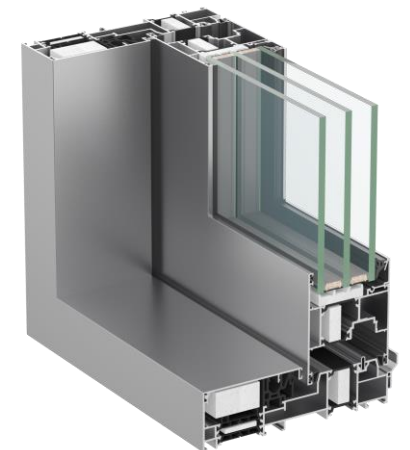
COMFORT CLOSE



ALUHAUS 77 SLIDE INTERNAL AND EXTERNAL HANDLE



ALUHAUS 77 SLIDE DOUBLE RAIL SECTION



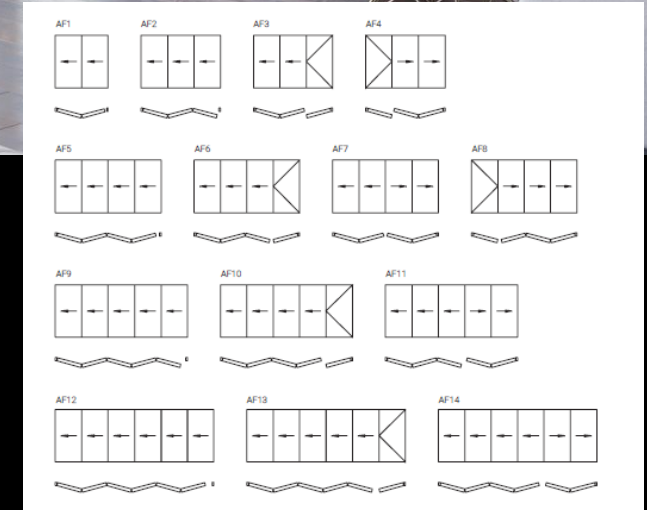
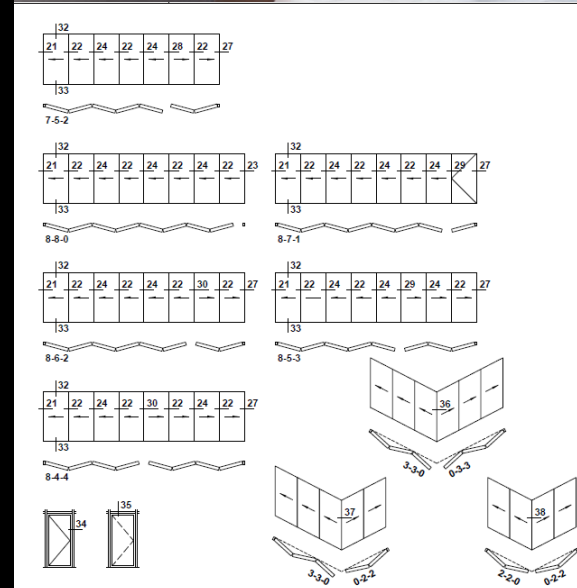
ALUHAUS 77 SLIDE SINGLE RAIL SECTION

Folding Doors

ALUVIEW FOLD

SPECIFICATION

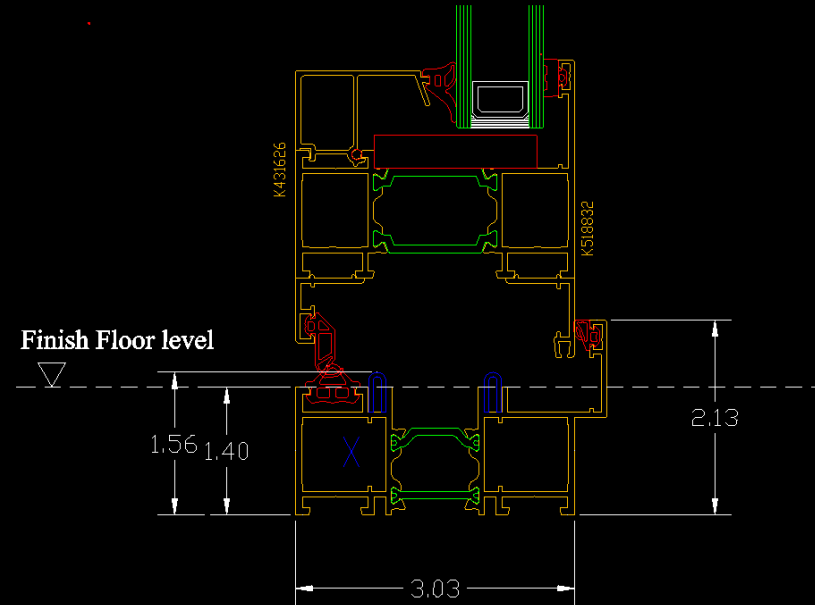
- Open out and open in option available
- Various sash configuration available
- Low Threshold with ramp
- Door with both sided handle and lock
- Corner without post
- Frame depth 86mm (3.38")
- Sash depth 77mm (3.03")
- Max sash weight – 120kg (267 lb)
- Max sash height – 3000mm (120")
- Max sash width – 1200mm (39.37")
- Max glazing thickness 61mm (2.40")



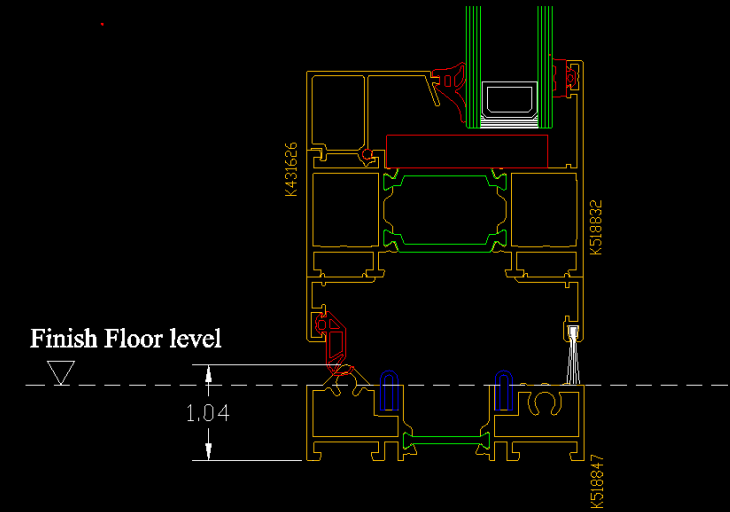
Examples of sash combinations

Folding Doors

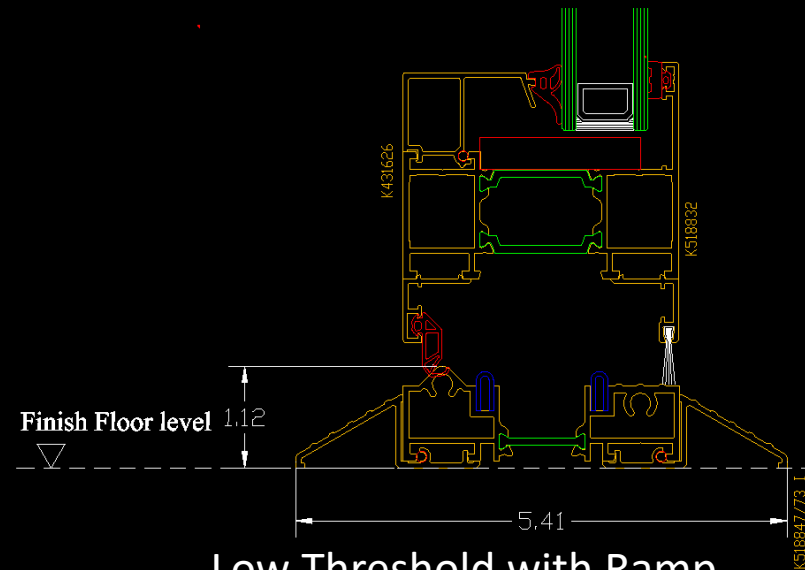
ALUVIEW FOLD



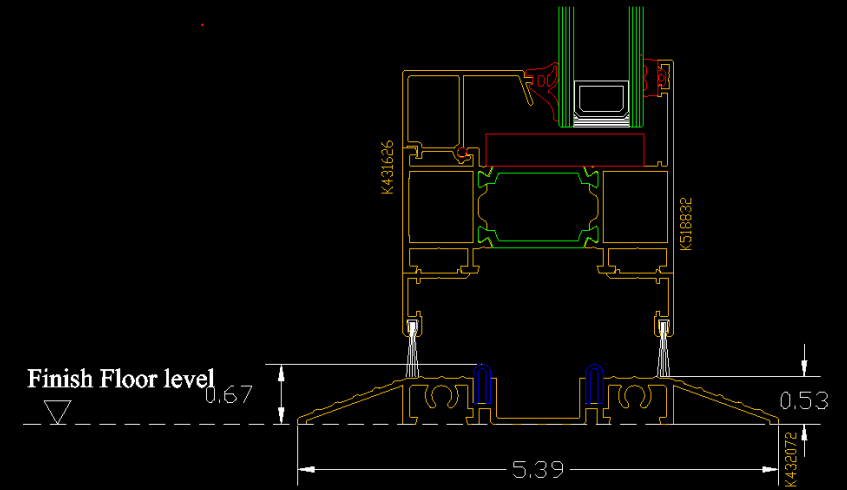
Standard frame at the bottom



Low Threshold – option 1



Low Threshold with Ramp



ADA Low Threshold with Ramp

SLIDING DOORS

ALUVIEW SKY+

The ALUVIEW SKY PLUS sliding door system with invisible frame uses narrow profiles. This gives the construction a modern and minimalist look. Constructions fabricated with ALUHAUS SKYLINE PRO have a one-of-a-kind design and raise the profile of any project. They provide a comfortable, threshold-free connection of indoor and outdoor living spaces making natural environment part of users' daily experience. While the doors can be very large, their slim construction gives the impression of lightness and delicacy. The product is uniformly glazed, has slim modulations and perfectly fits into high-end construction market..

Application and functionality

- 2.8" (door leaf) and 7.5"-deep profiles (2-slide frame)
- modern design and high aesthetics: the frame is concealed in the wall, in the floor and in the ceiling, the frame profile is fully aligned at the sides, the visible connection width of door leaves is 1"
- Door leaves up to 1500 lb and up to 12' high
- 3-chambered, thermally-insulated profiles
- 2.04" to 2.36"-thick triple glazing units
- door opens manually or automatically
- drives and control units are concealed in frame profiles
- can use an automatic unit mounted on the outside of the construction

Design

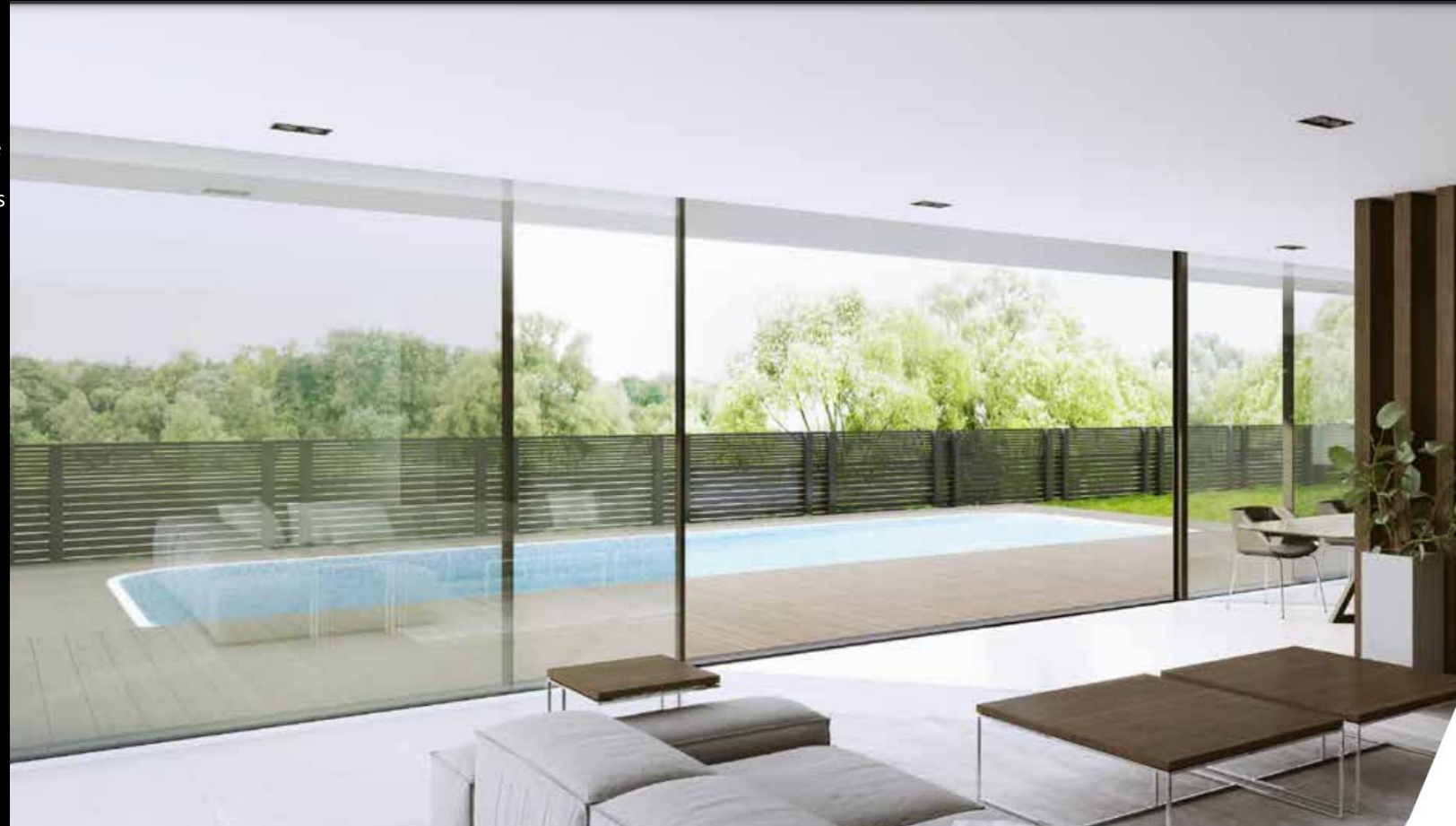
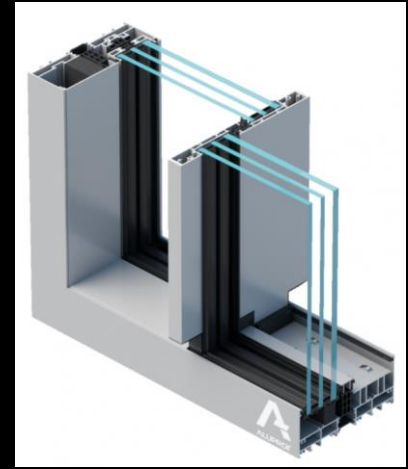
- Frame depth 7.5"
- Sash depth 9,92"

Sizes

- Max sash weight – 700kg (1500lb)
- Max height – 4000mm (157")

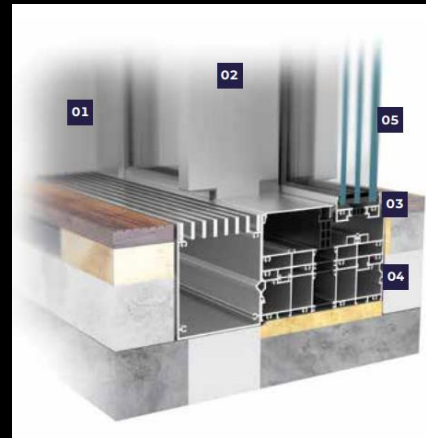
Glazing

- Max glazing thickness 2.04"-2.36"

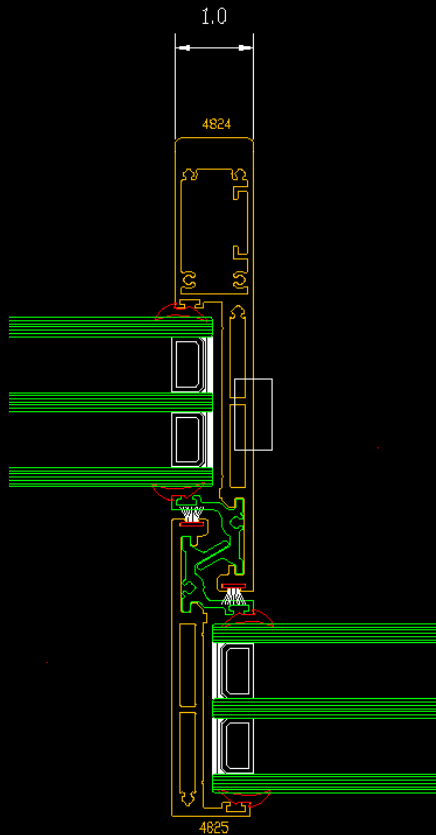
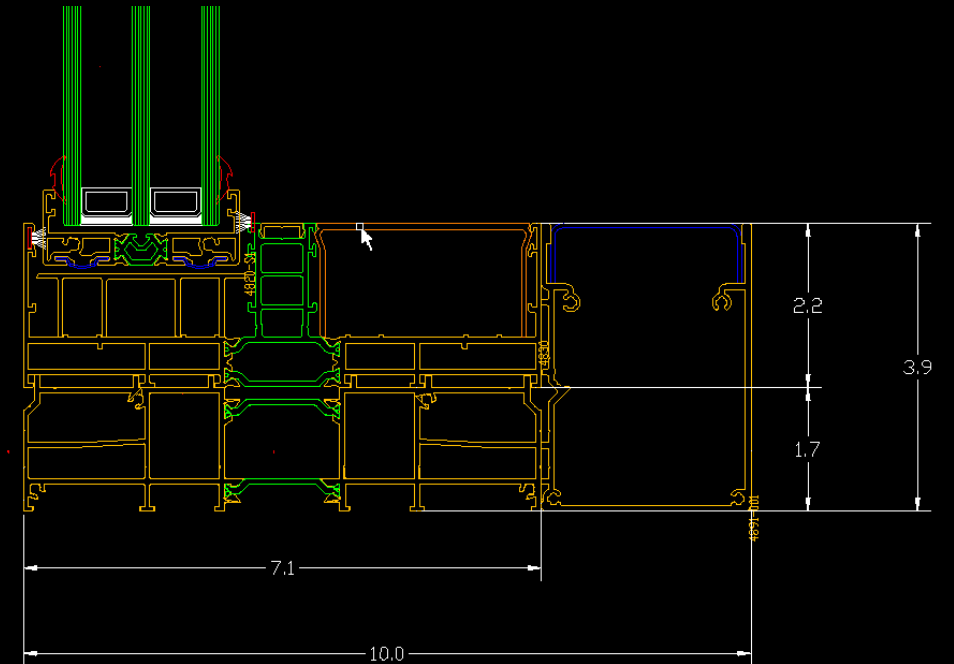


SLIDING Doors

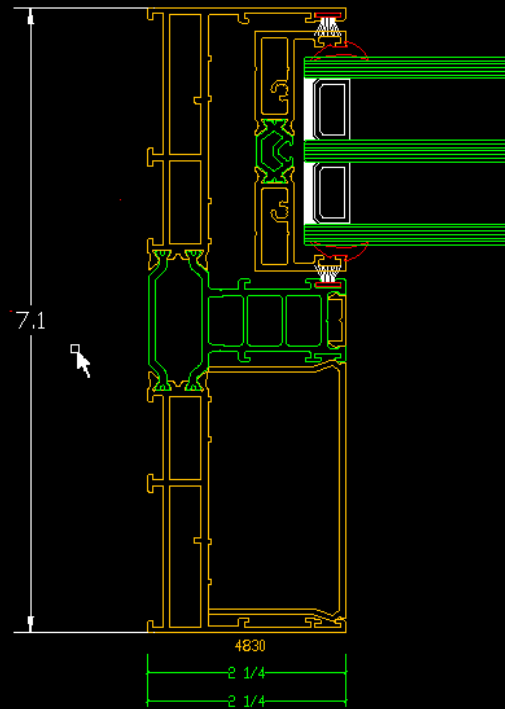
ALUHAUS SKYLINE PRO



FLAT THRESHOLD WITH DRAINAGE SYSTEM



Standard mullion



Frame

SLIDING DOORS

ALUVIEW SKY

The ALUVIEW SKY sliding door system with invisible frame uses narrow profiles. This gives the construction a modern and minimalist look. Constructions fabricated with ALUVIEW SKY have a one-of-a-kind design and raise the profile of any project. They provide a comfortable, threshold-free connection of indoor and outdoor living spaces making natural environment part of users' daily experience. While the doors can be very large, their slim construction gives the impression of lightness and delicacy. The product is uniformly glazed, has slim modulations and perfectly fits into high-end construction market.

Application and functionality

- Mullion only 0.78" (20mm)
- 2.8" (door leaf) and 7.5"-deep profiles (2-slide frame)
- modern design and high aesthetics: the frame is concealed in the wall, in the floor and in the ceiling, the frame profile is fully aligned at the sides, the visible connection width of door leaves is 1"
- Galandage version available for 1, 2, 3 and 4 sashes
- 90 degree open corner available (no post)
- Door leaves up 700 lb
- 3-chambered, insulated profiles
- 1.18" max thick double glazing units
- Up to 6 sashes and up to 3 rails

Design

- Frame depth 4.57"
- Sash depth 7.5"

Sizes

- Max sash weight – 320kg (700 lb)
- Max height – 3000mm (118")

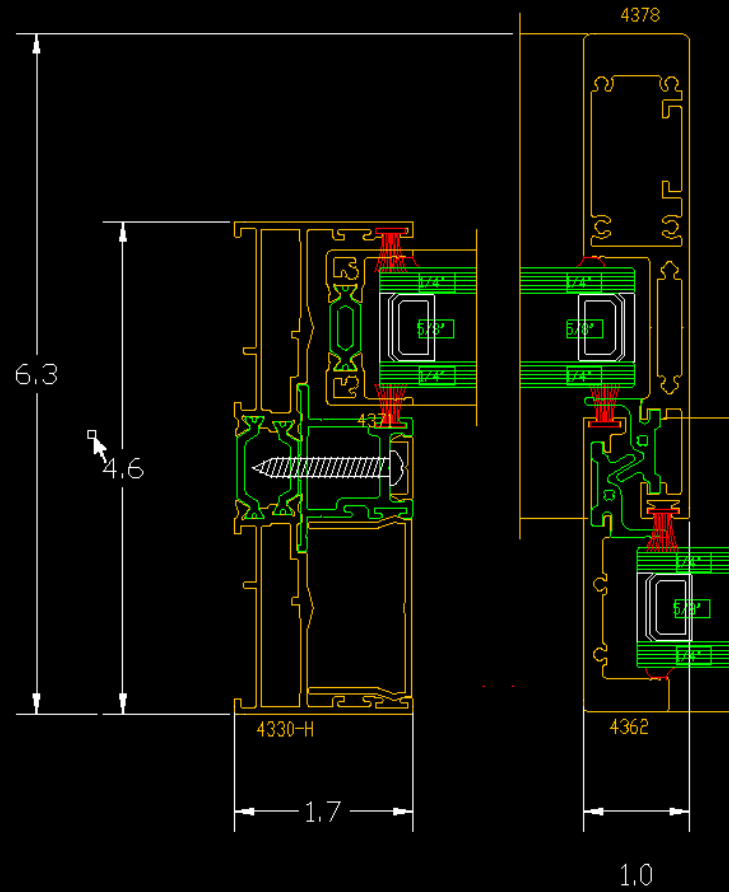
Glazing

- Max glazing thickness 1.18"



Sliding Doors

ALUVIEW SKY



Frame

Standard mullion



Entrance Doors



Entrance Doors

TENVIS

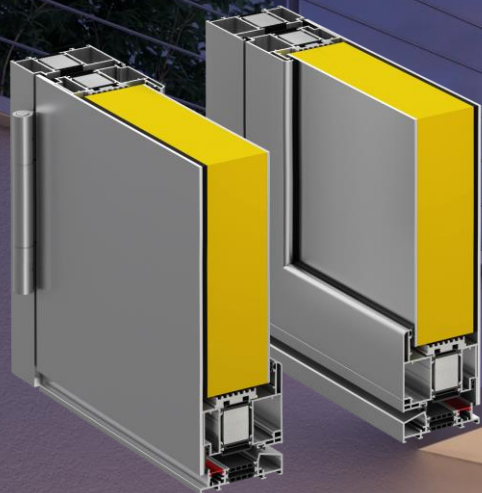
- **ALUHAUS TENVIS.**

TECHNICAL DESCRIPTION OF DOOR SYSTEM

- total thickness of the door 75 mm
- 62 mm or 76 mm thick panel (2.44" or 2.99") constructed of two aluminum sheets 3 mm thick(outer sheet) and 2 mm (inner sheet);the entire space between them is filled with material with high thermal insulation
- maximum door size up to 1300 x 2450 mm(51.20" x 96,46")

STANDARD EQUIPMENT

- vertical pull bar on the outside improves aesthetics and makes it easier to latch the door,
- internal anodized handle,
- surface hinges with adjustment in three planes,
- ring rosette securing the key cylinder
- Key cylinder with safety clutch, allowing opening of the door in a situation when there is a key inserted in the lock from the inside,
- Secury Automatic 2 - door self-locking three points with adjustable catches located on the frame part.



Door leaf with Single-Flush Panel



Door leaf with Double-Flush Panel



Entrance Doors

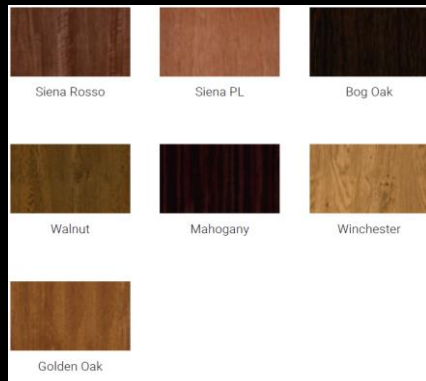
DOOR COLORS

STANDARD COLORS



All RAL colors are available optionally.

DECORAL COLORS



DECORAL is a process of improving the aesthetics of aluminium profiles and surfaces. It is based on the thermosublimationphysico-chemical process that causes the transition of a substance from the solid state to the gaseous state. Such technology is also referred to as thermal transfer in some industries. DECORAL can also be used for other materials (e.g. steel, glass, plastics, ceramics). The basic condition for its use is that the material must withstand a temperature of 200°C for about 10 minutes without deforming. Aluminium is an example of a material ideally suited for the use of this technology. When heated even to such high temperatures, it does not deform and returns to its original form without losing its shape. The use of thermal transfer enables the application of various patterns on the surface of profiles, including ones that resemble stone or wood surface. We have used this method to make sure that our doors and windows look as unique as possible. The use of this technique not only gives spectacular visual results, but also proves that our doors are made of materials resistant to exceptionally high temperatures.



Multi-color – some door models can be personalized by combining two different colors on the same surface.



Dual colour – all door models can be made in different colours on the internal and external side without additional charge (within the range of standard colours).



Entrance Doors

MIRU EVO DOOR

Ideal for use in storefronts, multifamily buildings and Commercial areas wherever robustness and resistance to heavy loads are required .

Aluminum and glass doors are ideal for use in storefronts, multi-family buildings.

TECHNICAL DESCRIPTION OF DOOR SYSTEM

- total thickness of the door 75 mm
- Glass thickness up to 65mm
- maximum door size up to 1300 x 2450 mm(51.20" x 96,46")
- Double door available
- Anti-Panic Hardware available

STANDARD EQUIPMENT

- Both side anodized handle,
- surface hinges with adjustment in three planes,
- rosette securing the key cylinder
- Euro Profile Key cylinder with safety clutch, allowing opening of the door in a situation when there is a key inserted in the lock from the inside,
- Single point lock

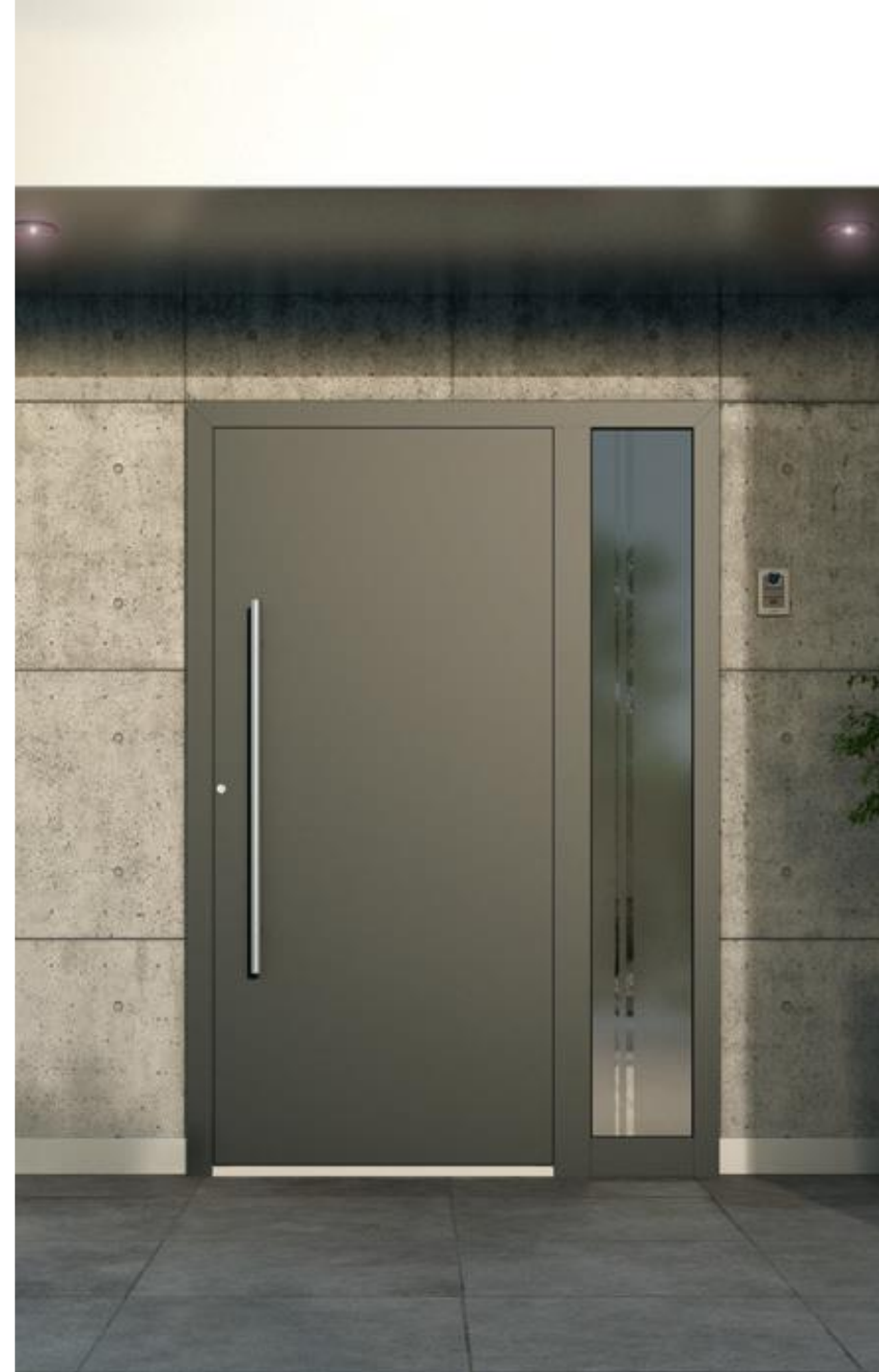


Entrance Doors

ACCESSORIES

SIDE LIGHTS

Door panels with sidelights with decorative sandblasted glass produce a spectacular visual effect. The design on the glass can be customised (sandblasting).



Entrance Doors

ACCESSORIES

PULL HANDLES



H6 INTERNAL HANDLE



STANDARD INTERNAL DOOR HANDLE



Entrance Doors

ACCESSORIES



Security latch

This door jammer allows you to crack the door open. The door will open completely only when you turn the handle once more.



Handrail with touch sensor / Handrail with push button

A touch sensor / handle button in combination with an electric lock in secure espagnolettes ensure comfortable operation: doors can open freely when the pull handle is touched. When the door is closed manually or with a door closer, it is locked again.



Concealed Hinges

Adjustable in three planes, these hinges are the most exclusive solution to increase the aesthetic qualities of your door. They hide the fittings from view both on the outside and on the inside.



Concealed door closer

The hidden door closer provides both functionality and remarkable aesthetics. It is completely concealed in the leaf plate – only the sliding rail is visible when the door is open. Our standard hidden door closer offers an infinitely variable adjustment of the hold-open position from 80 to 120 degrees.

Choose automatically locking doors!

Our ELITE doors are tested and certified to RC2 and RC3 burglar-resistance classes in accordance with EN 1627-1630, confirming their highly advanced security parameters.



SECURITY AUTOMATIC LOCK 'WITH A CLICK'

The unlocking is done from the outside by turning the key or from the inside by using the door handle.

Advantages of the lock:

- significantly increased burglary protection,
- no deformation of the door: it is always locked,
- double-sided latches – can be used for left and right hinged doors,
- a wide range of accessories.



SECURITY AUTOMATIC LOCK WITH ELEKTROMATIC

With SECURITY COMFORT and an electronic key, the unlocking is done from the outside without contact. After the door is closed, it is locked again.

Advantages of the lock:

- improved burglary protection,
- no deformation of the door: it is always locked,
- easy to open – no need to use force to reverse the bolts by turning the key.

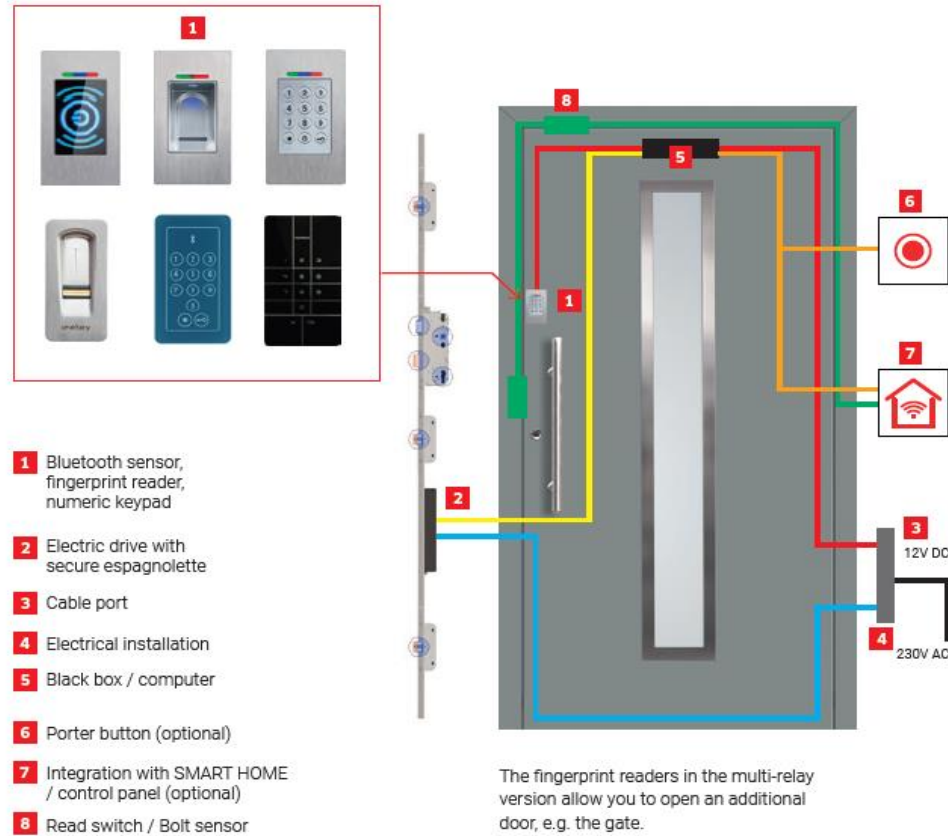
The electric motor will pull the bolts back to the door leaf for you. The frame is fixed, which increases the burglar resistance of the solution. A biometric reader or a touch sensor in the handle is an additional control equipment on the outside. Optional remote control via a smartphone application is possible.

Entrance Doors

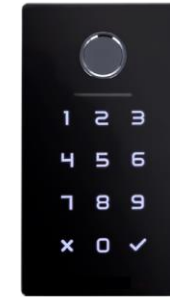
ACCESSORIES

Well-considered security

The coding process with the highest degree of security is implemented as standard in order to completely eliminate any risk of manipulation. The risk of unauthorised manipulation is eliminated by completely enclosing the access control elements within the door.



The fingerprint readers in the multi-relay version allow you to open an additional door, e.g. the gate.



LOCK



BRIDGE



KEYPAD

Prizes awarded by the readers of:





ALUVIEW STOREFRONT

Storefront aluminum systems combine ease of installation and great possibilities of arrangement and adaptation to the requirements of the architect. At the same time, modern profiles provide very good tightness and thermal insulation.

- Achieves high thermal-insulation
- Compatible with MIRU EVO Window system
- Wide range of accessories
- Double or triple glazing available